

«From settlement to employment»

A project on how to work together (NAV and VIVA) to get refugees integrated.

(Consultants from Work and pension (NAV) introductory programme and adult education/teachers (VIVA))

Model of co- operation

Consultants for the introductory programme

- The law of Introduction
- Aims for introductory programme

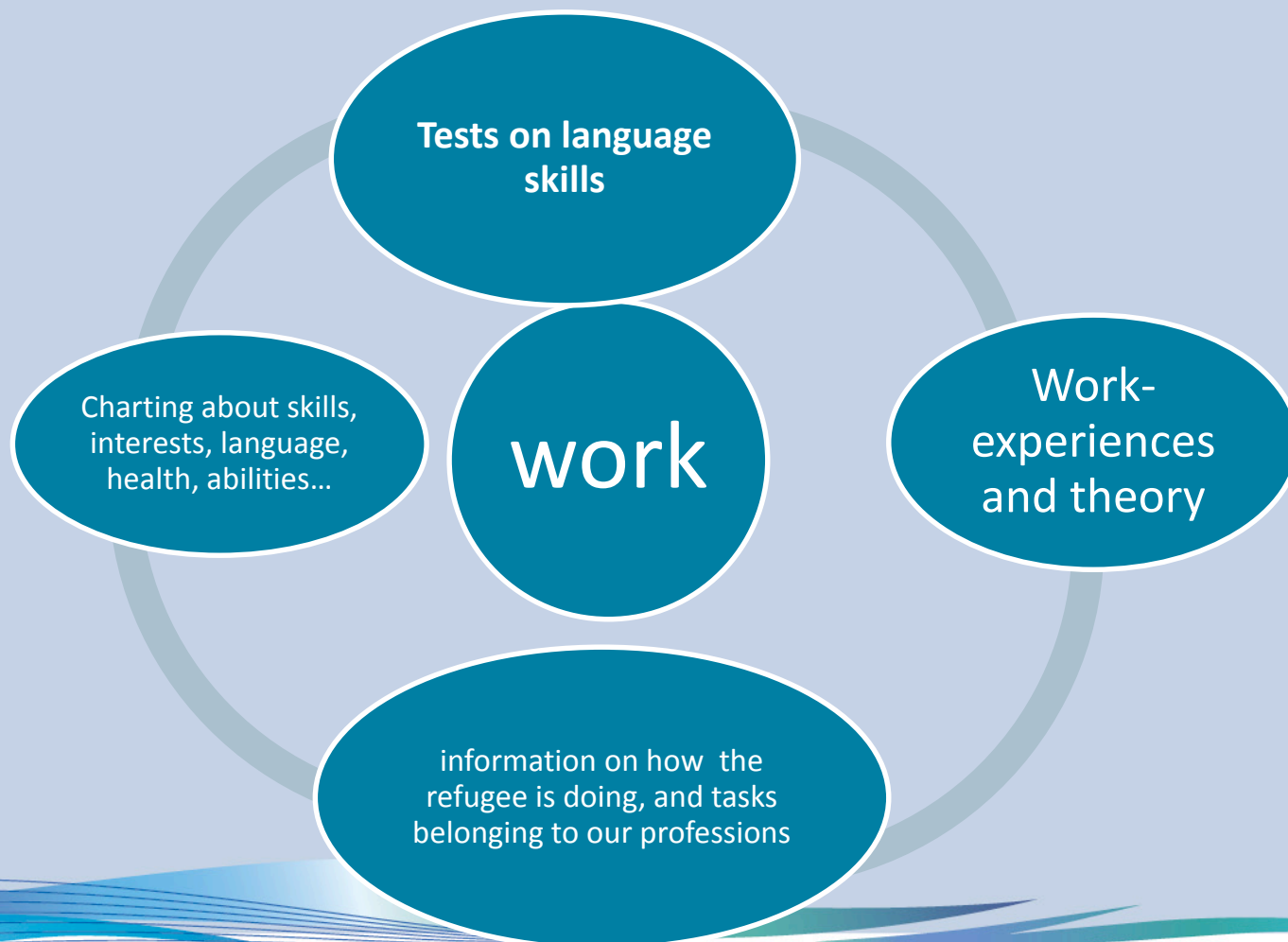
Adult Education

- Aims for language levels
- Aims for knowledge about Norwegian worklife, labour

NAV

- Economic advice and possibilities,
- programmes, courses,
- Check on health and ability for work. Recruiting to work

Aims on individual bases.



How we do it..

- **Regularly meetings** between VIVA and NAV, focusing on the individual aims.
- **Consulant of introductory programme:** Charting about skills, interests, language, health, abilities, hopes, education...
 - . Brings in information about the **AIMS**.
- **NAV** get to know the refugees as fast as they are starting their introductory programme. NAV will use information to contribute to successful integration. Some people need help for several years.
- **Adult education:** Language skills, offer the labourmarket education adapted to the specific profession.

Common understanding of our commission

- Everybody is a resource, either to themselves, work or family
- Learning in context
- Authentic situations give the best results of learning culture, language, words and phrases, social customs
- Activity is stimulating for people
- Network is important to feel integrated and to get a job
- Realistic expectations in condition to how to get a job, and what work is like in Norway
- Education, economy, labour market

NAV Bamble – presentation

- *NAV is the department of work and pension in Norway.*
- *Around 19,000 employees nationwide, 456 NAV offices.*
- *NAV is the only organisation of its kind in Norway and is fully owned by the Norwegian government.*
- *Traditionally 1/3 of the Norwegian national budget is distributed by NAV.*
- *NAV Bamble is a partnership between the municipality of Bamble and the Norwegian State. We have 35 employees and the municipality of Bamble has around 14,000 inhabitants.*
- *Our national slogan is «we give people possibilities».*

NAV Bamble – CRM

Philosophy: NAV Bamble believes in personal contact with employers to build relations and thus achieving results.

As the department of work and pension we have an agenda and the tools when businesses are doing well, and when they struggle. No other business in Norway have an agenda similar to ours. Our currency is people and our profit is measured by the number of people we help to get jobs.

The municipality of Bamble is relatively small and lots of employers know each other through the community and business relations. This helps our work because employers open doors for us if we provide good service. NAV Bamble is also member of the local Chamber of commerce.

We contact employers after we clarify what needs a refugees has. It is important for us to find a good match so that we can increase the chances of success. This is an important work and something VIVA and NAV Bamble work hard to improve all the time.

NAV Bamble – CRM

- *NAV is the department of work and pension in Norway.*
- *Around 19,000 employees nationwide, 456 NAV offices.*
- *NAV is the only organisation of its kind in Norway and is fully owned by the Norwegian government.*
- *Traditionally 1/3 of the Norwegian national budget is distributed by NAV.*
- *NAV Bamble is a partnership between the municipality of Bamble and the Norwegian state. We have 35 employees and the municipality of Bamble has around 14,000 inhabitants.*
- *Our national slogan is «we give people possibilities».*

Results

Det NYE Norge

Nå er han kjøkkensjef

Alex fra Burma startet i oppvaska



Fakta

- Alex er 35 år gammel og kommer fra Burma.
- Han har bodd i Norge i 10 år.
- Han har vært i Norge i 10 år.
- Han har vært i Norge i 10 år.

OPPLÆRING

Jeg har hatt ansatte fra nær sagt alle verdensjoner. De har lært og vi har lært masse, sier Andreas Kristiansen.



Fakta

- Andreas er 45 år gammel og kommer fra Norge.
- Han har bodd i Norge i 10 år.
- Han har vært i Norge i 10 år.
- Han har vært i Norge i 10 år.

OPPLÆRING

Dette er Telemark i dag

Fakta

- Telemark er et fylke i Norge.
- Det har et areal på 15 000 km².
- Det har 150 000 innbyggere.
- Det har 150 000 innbyggere.

OPPLÆRING

Trainee

